

5 FUN FACTS ABOUT Illinois Corn



Production

Home to nearly 11 million acres dedicated to growing corn, Illinois ranks No. 2 in U.S. corn production.

Economic Impact

In 2020, Illinois corn production generated more than \$7 billion in cash receipts.

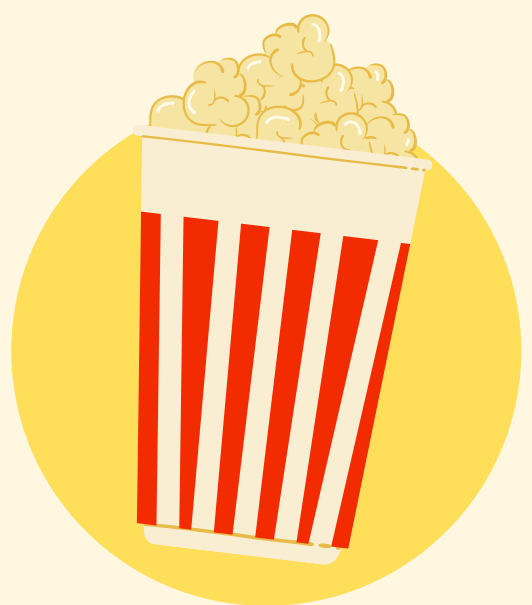


Field Corn & Sweet Corn

Almost 98% of corn grown in Illinois is field corn, the kind used to feed livestock and produce many vital products. Sweet corn accounts for about 2% of Illinois-grown corn.

Popcorn

Popcorn is another type of corn grown in the state. Illinois ranks No. 3 in the nation for popcorn production.



By the Numbers

On average, one ear of corn contains 800 kernels and bushel of corn contains about 72,800 kernels.